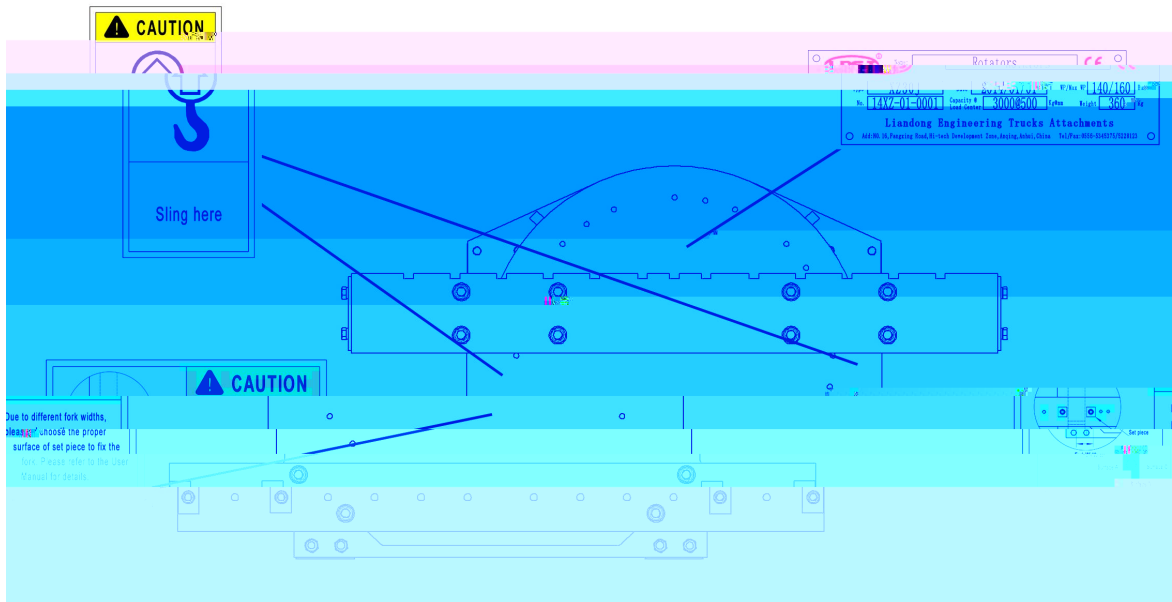

1	1
2	6
3	8
4	11
5	14
6	16
7	15

1.

1.1

" " " " " "



1.2



— —

— —

— —

— —

— —

20 40

85

1 000

5 m/s

1. 3

1. 3. 1

1. 3. 1. 1



1. 3. 1. 2





1.3.2



1.3.3

— —

— —

— —

— —

— —

— —

— —

— —

1. 3. 4

— —

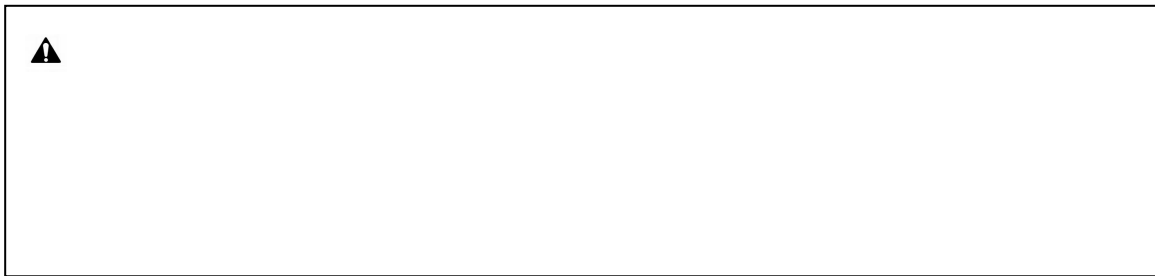
— —

— —

— —

--

--



	4762	4014	4032	
		8.8	10.9	12.9

10	45	66	77
12	77	115	135
16	190	280	330
20	385	550	640

--

--

1.4

— —

— —

— —

2.

10 (1/4)

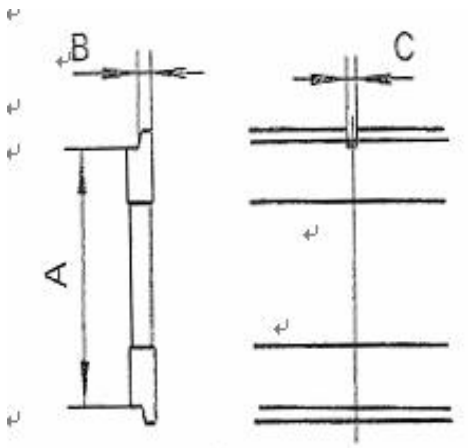


			/		
17*	35	160	19	26	
22*/30*/35*	35	160	19	38	
45/*60*	35	160	38	57	

- ①
- ②

1

2328-2007

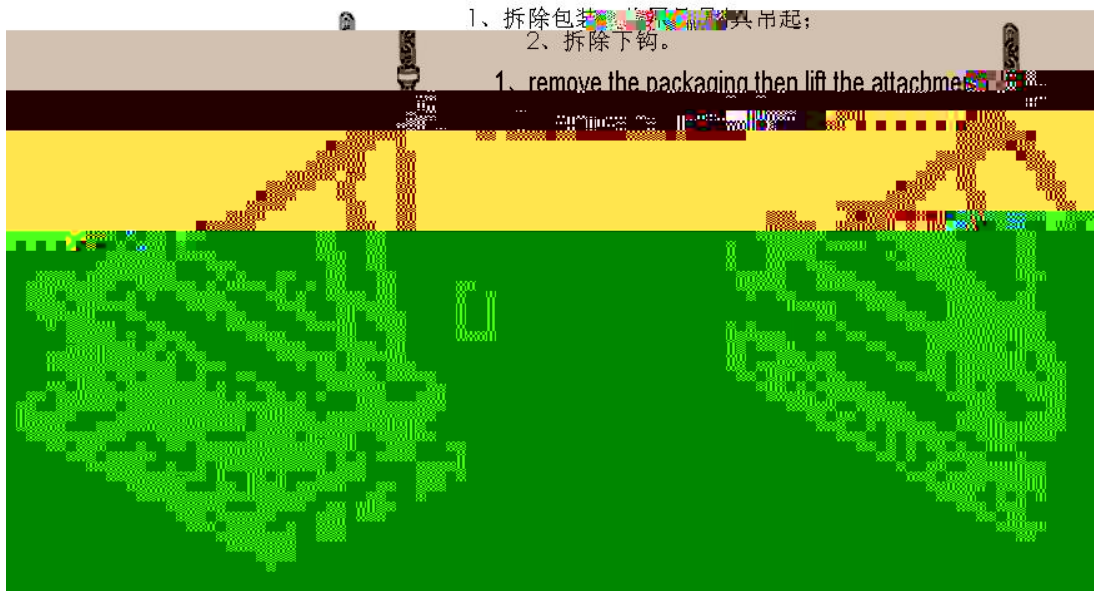


	A		B		/	
	380	381	15	16	15.2	16.8
	474.5	476	20.5	21.5	18.2	19.8
	595.5	597	24.5	25.5	18.2	19.8

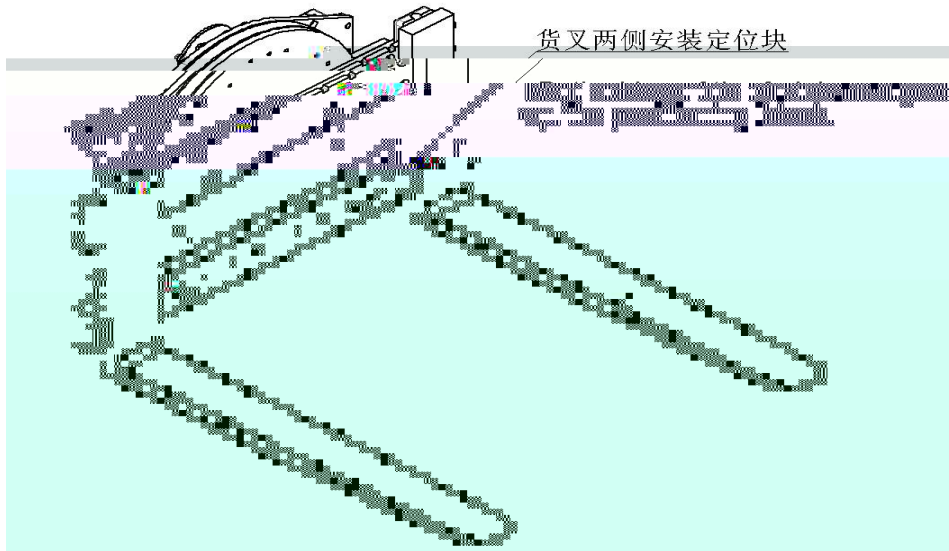
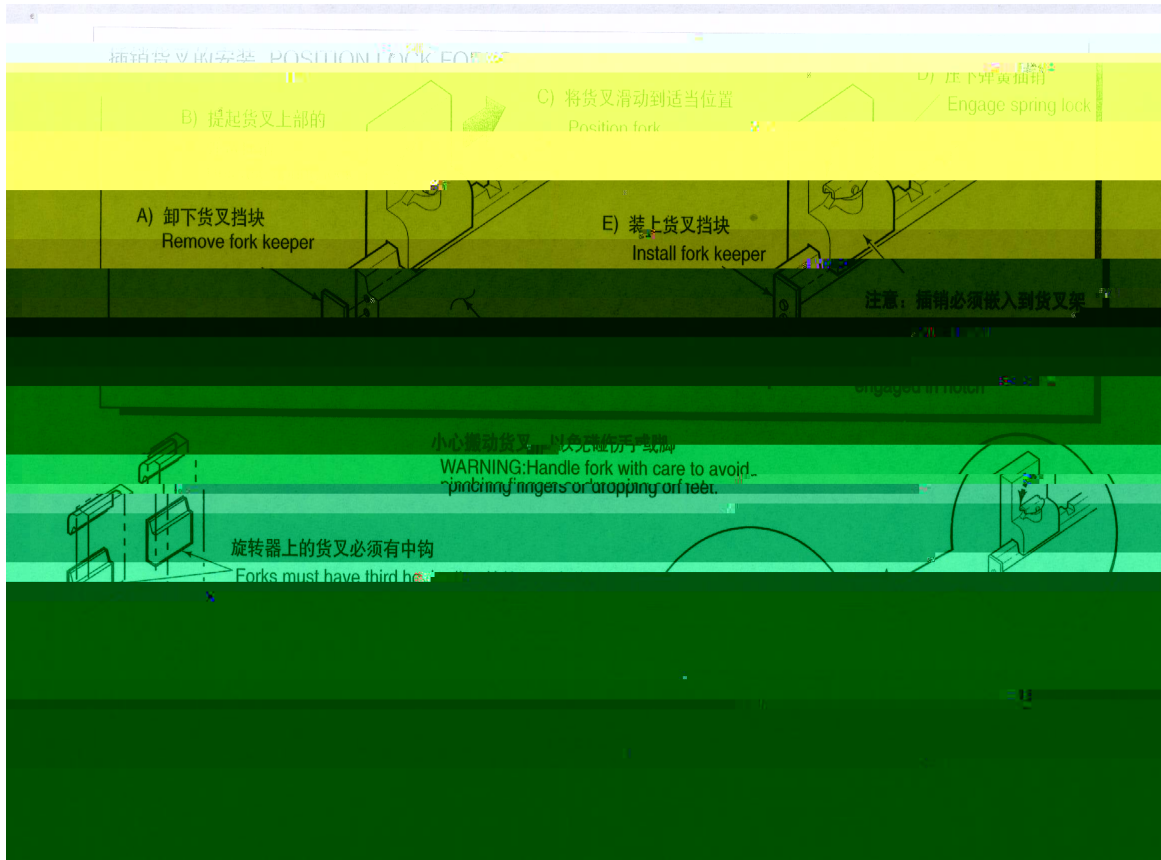
1

3.

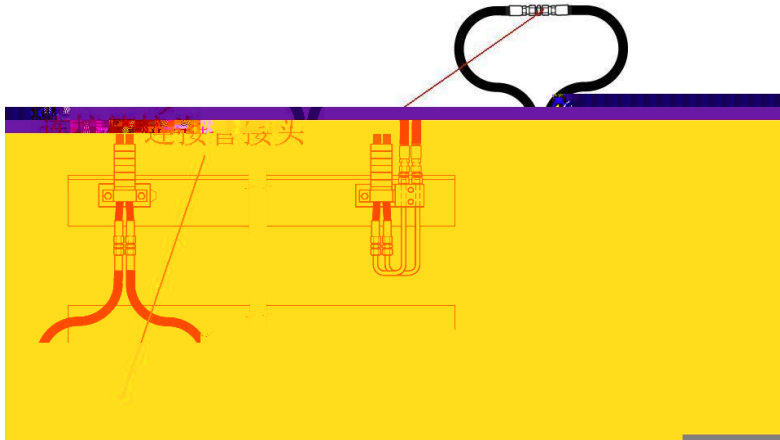
3.1



3. 2



3. 3



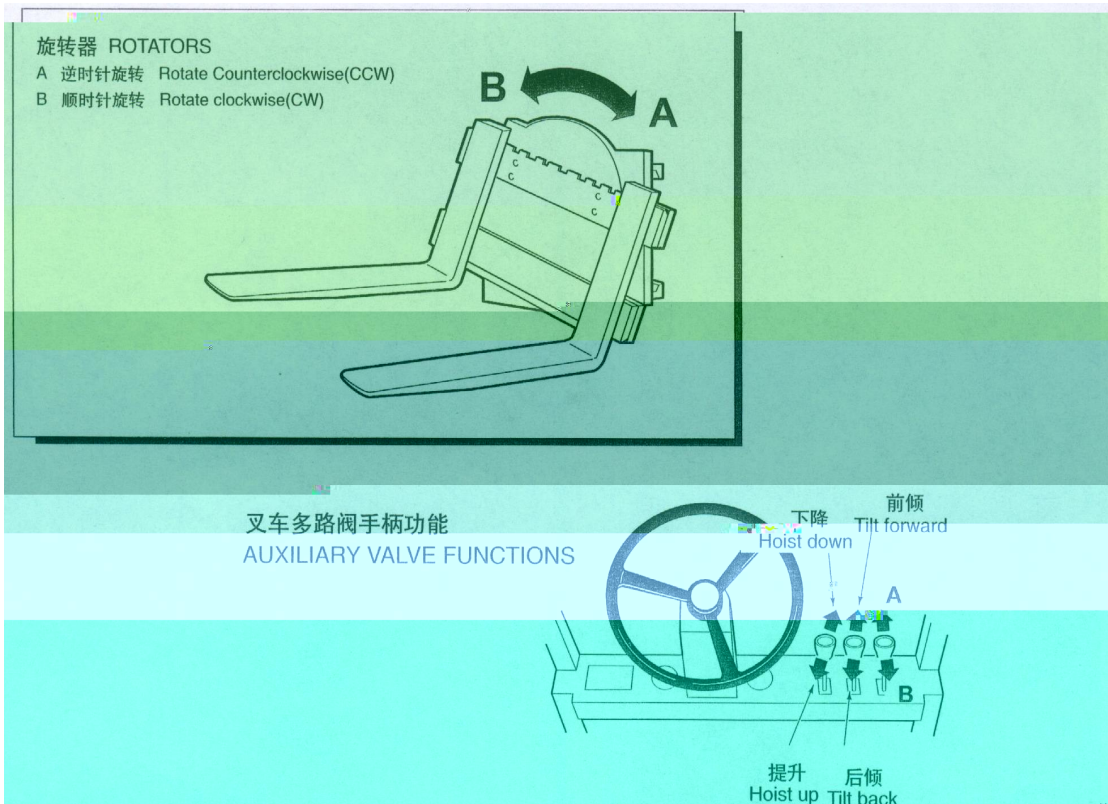
▲

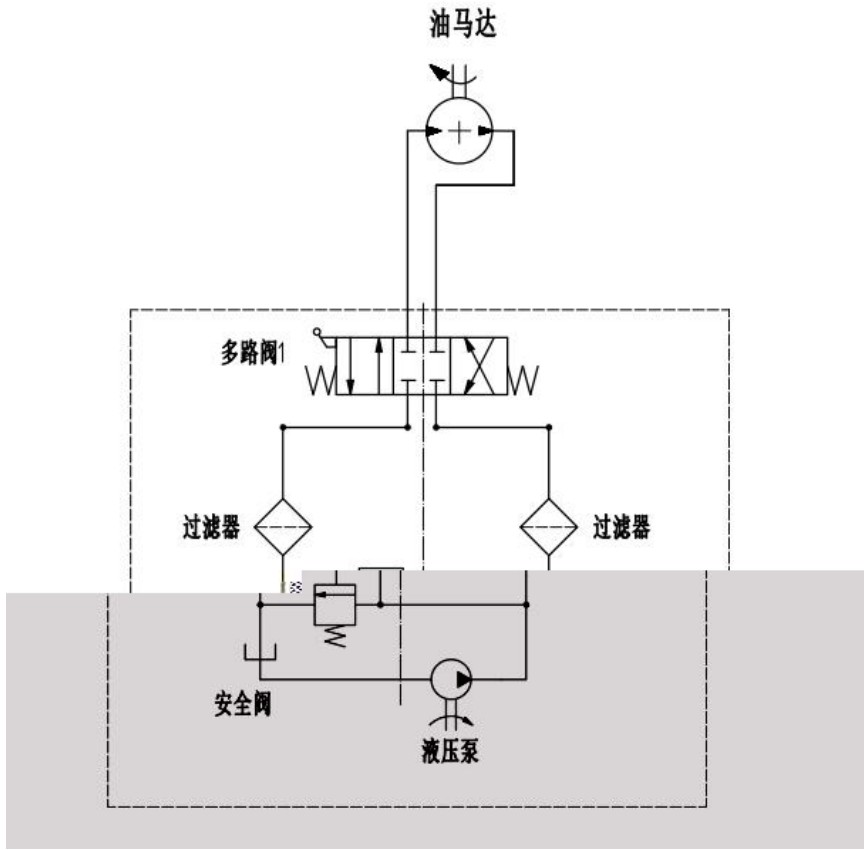
3.3

4.

4.1

4.1.1





4.1.2

4.1.3

4.2

4.2.1

4.2.2

4.2.3

50

100

4.2.4

4.2.5

5.

5.1

5.1.1

5.1.2

/

5.1.3

5.1.4

5.1.5 100

5.2

5.3

5.3.1

5.3.2

5.3.3

5.3.4

5. 3. 5

5. 3. 6

7. 6

5. 3. 7

7. 6

5. 3. 8

5. 3. 9

5. 4

5. 4. 1

5. 4. 2

10°

5. 5

5. 5. 1

5. 5. 2

5. 5. 3

5. 5. 4

5.5.5

5.5.6

5.6

6.



7.

7.1

(1) 24 4000

(2) 12

2000

7.2

(1)

(2)

(3)

(4)

(5)

7.3

(1)

(2)

(3)