

——安徽合力股份有限公司

2010 年度社会责任报告



" 2010 " " " " " 2010

2010 2010 1 1 2010 12 31 2008

> 2010 <

<http://www.helichina.com>

1996

“ ”
“ ” “ ”

“ ” 2010

2010

“ ”

	24
	25
	27
	27
	28
	31
	31
	32
	33
	34
	35
2011	37
1 2010	38
2	39
3	41

600761

20

1991

20

2009

8

Modern Materials Handling

3 57

39.47

24.76

5480

" "

"

" "

" "

"

"

" " HELI"

"

"

2010

130

76

" HELI"

65

1996

9700

3 57

"

"

"

50

"

"

300

"

"

"

2009-2010

"

"

1

2

3

4

" "

" "

" "

" "

5

" " ,

" "

6

7

8

9

10

11

“ ”

12

“ ”

13

“ ”

“ ”

“ ”

“ ”

14

“ ”

“ ”

“ ”

“ ”

“ ”

15

“ ”

3

2009

9

3

2010

4

26

2009

5

1

2010

4

15

“

”

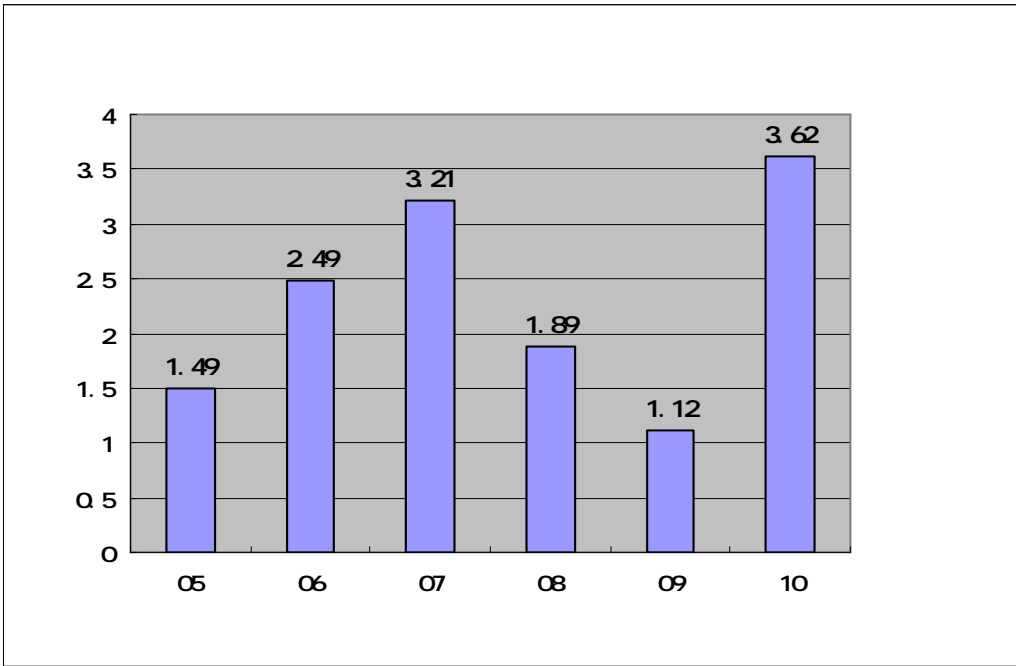
“

”

2010

2010

“ ”



2005-2007

2008-2009

2010

1			
2010	2009	2010	
4			
		"	2009
		"	" "
2			
	2010		9
2010			
3	2010		
—		2	
	"		TOP10'
			2010 6
		2009	
		35,695,447.70	10
			2008
2009			
	2010	2010	356,954,477
	10	3.00	
107,086,343.10		2010	356,954,477

10

2

71, 390, 895

			(%)
2005	46, 043, 171. 55	148, 565, 753. 54	30. 99
2006	71, 390, 895. 40	248, 736, 307. 41	28. 70
2007	71, 390, 895. 40	321, 220, 607. 36	22. 22
2008	35, 695, 447. 70	188, 609, 981. 86	18. 93
2009	35, 695, 447. 70	111, 605, 179. 54	31. 98
	260, 215, 857. 75	1, 018, 737, 829. 71	25. 54

1

2009-2010

300

2010

100



2010

1

2010

2

2010

“ HELI ”

” ”

”

” ”

” ”

” ” ” ”

” ” 2010 ”

” 2010

3

" " 2010

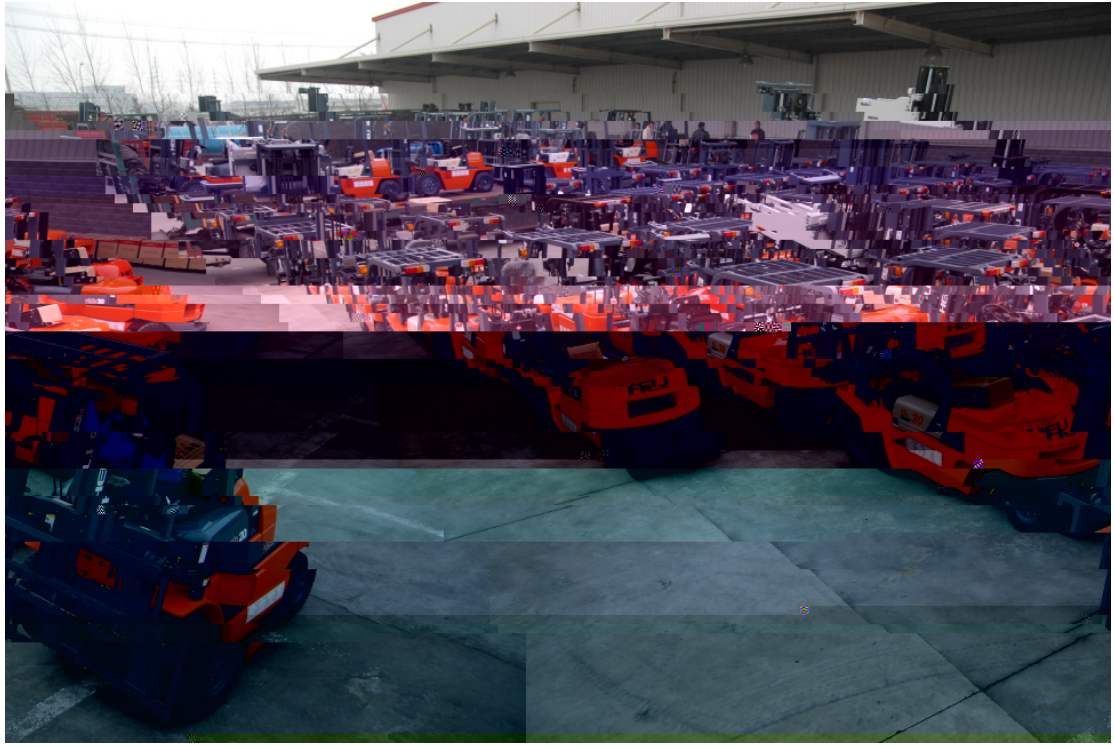
" "

4

10



" " 2010 " "



“ ”



“ ”



2010

" AAA "

" A

" " A

" 2010

2 2

“ ” ‘ ” ”

2010

52

77.61%



24%

2010

"

"

"

"

“ ”

,

2010

55

85

2

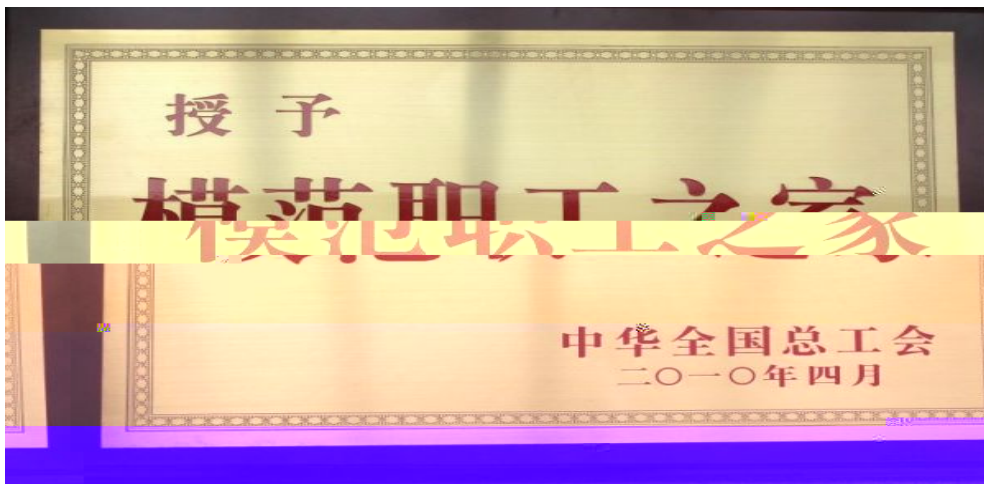
3

1

1

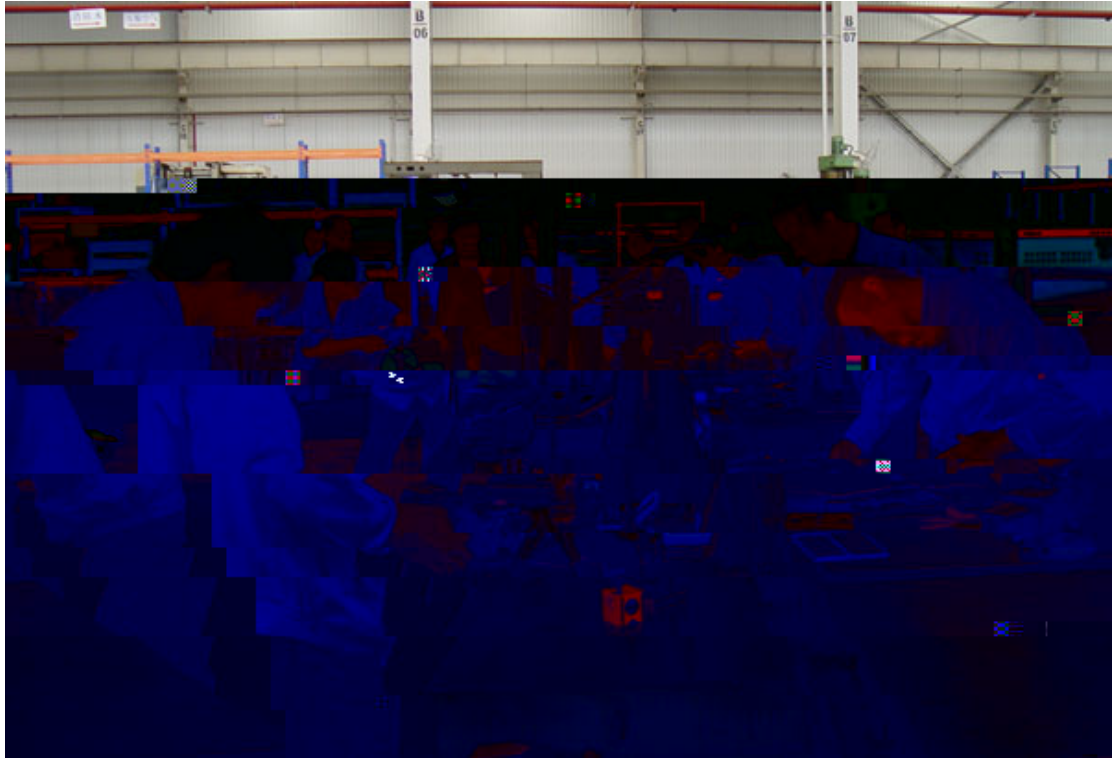
1

1

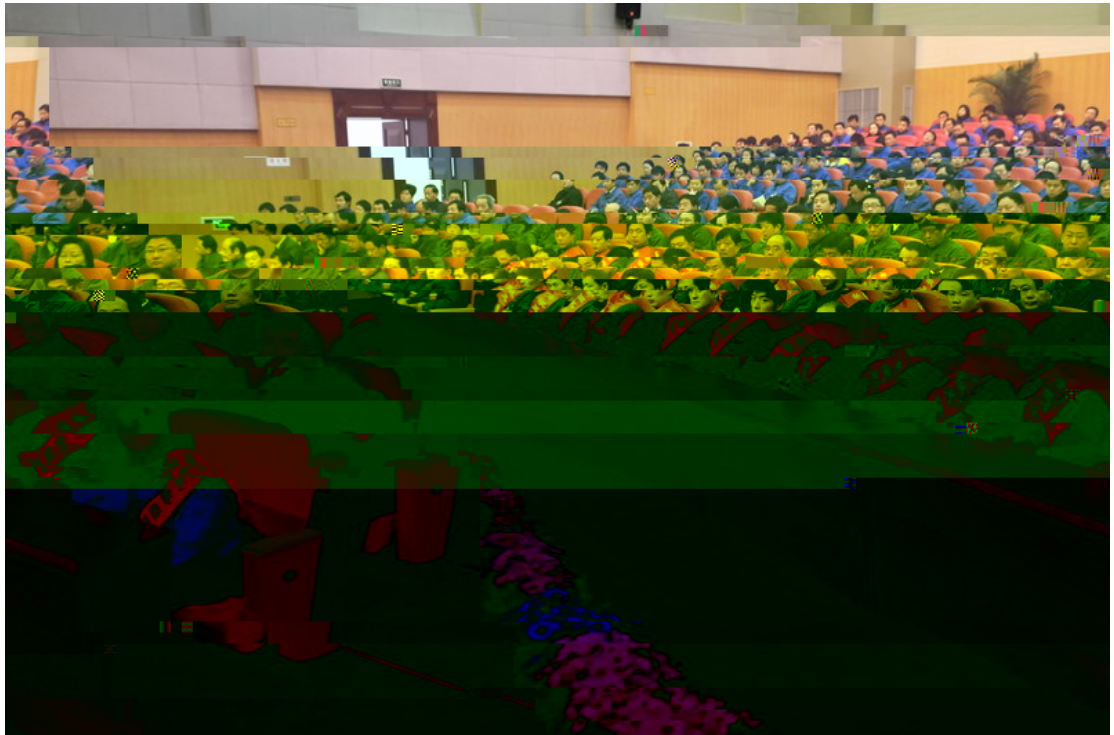


“

”



“ ”





			2010		
4 43	33%		"	"	
		7, 986			12%
15%		518		469	
				7	
			"	"	"
"	2010		26 95	"	"
800		3		4 48	



“ ”

“ ”
“ ”

1 2010
ISO9001 2008

2010 3
000
, ISO9001 2008

EC
2010 60 1-10

EC

2 2010

2010

98.55%

245

94.3

96.88%

3 2010 2010
1325 186 528
337 528
2010

4

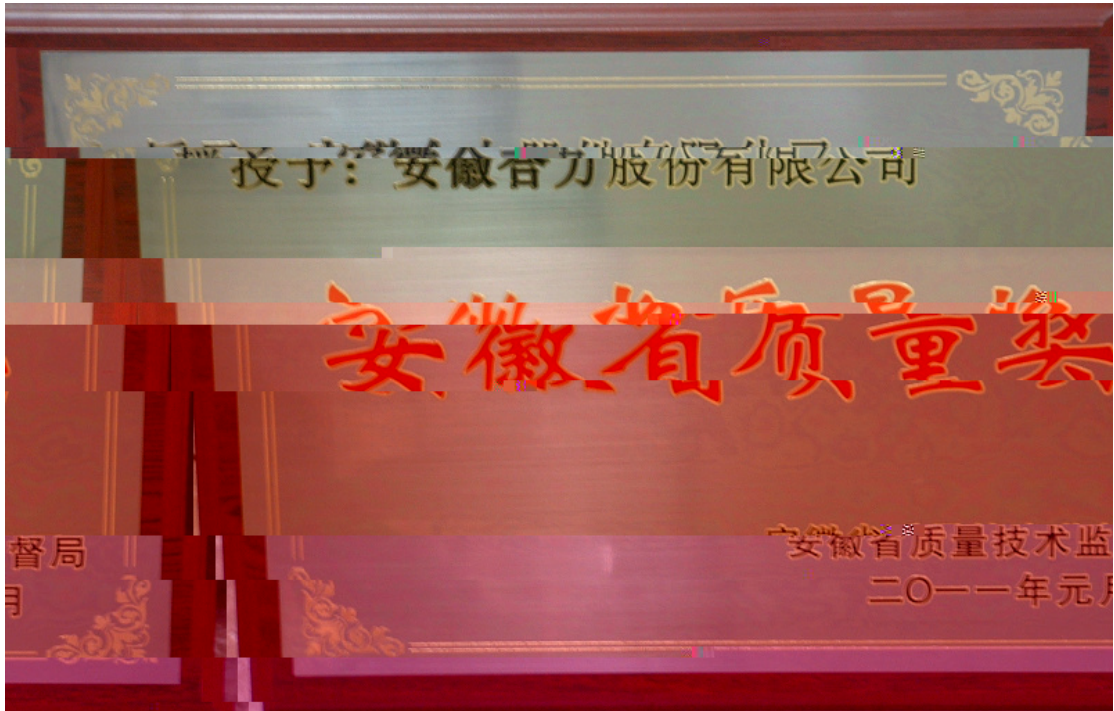
2010 7

6

“

”

“ ”



1

2010 113 , : 19 , 87 ,
 7 2010 , 36 , 2
 2 2010 7
 G 3 G 1-3 5
 1-4 5 45
 7
 3 ,

“ ”
“ ”
“ ”
CAE
4 2010

2



FEM2010



“

” 2010

I SO14001

1

2010

2100

“ ”

2

3

“ ”

2010

“ ”

4

4

2010

21,788.49

0.0752 /

2010

0.0600

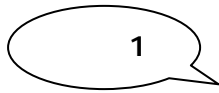
/

2009

20.21%

5,519.04

2010



2010 10

“ . ”



2

2010 11

2010

2010

50

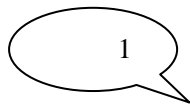


2010

112



“ ”



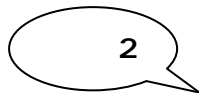
“ ”

2010

“ ”

“

”



2010 10 18

2010

1	AAA	
2		
3		
4	TOP10	
5	2010	
6	2010	
7	2010	
8		
9		
10		
11	A	
12		
13		
14		



“ ”

2011

2011

“ ”

1

2

3

4

5

6

7

1

2010

	2005-2009	2 60
	2010	10 3 2
		112
		2 2
		508 443 64
		36 213 14
		373 053 60
		10 189 44
		121, 865 15
		0
	‰	2
		0
		2100
	/	0 06
		5 480
		22 729
	" "	7986
		36

2

163

2010

2010

2010

