

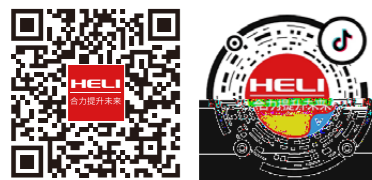
CPCD20/25/30/35 /40/45/50

KU6Y4(2)R-3/KU5Y4(2)R-2/W3Y4(2)R-2
W4Y4(2)R-2/XC7Y4(2)R-2/Q3Y4(2)R-2
KU4Y4(2)R-3-06/QC13Y4(2)R-3-6
QC7Y4(2)R-3-06/M1Y2R-3-06

让世界更合力
EMPOWER THE WORLD



2-5 t
R



安徽合力股份有限公司
ANHUI HELI CO., LTD.

Add / No.668, FangXing Road, Hefei, China
(Post Code) / 230000

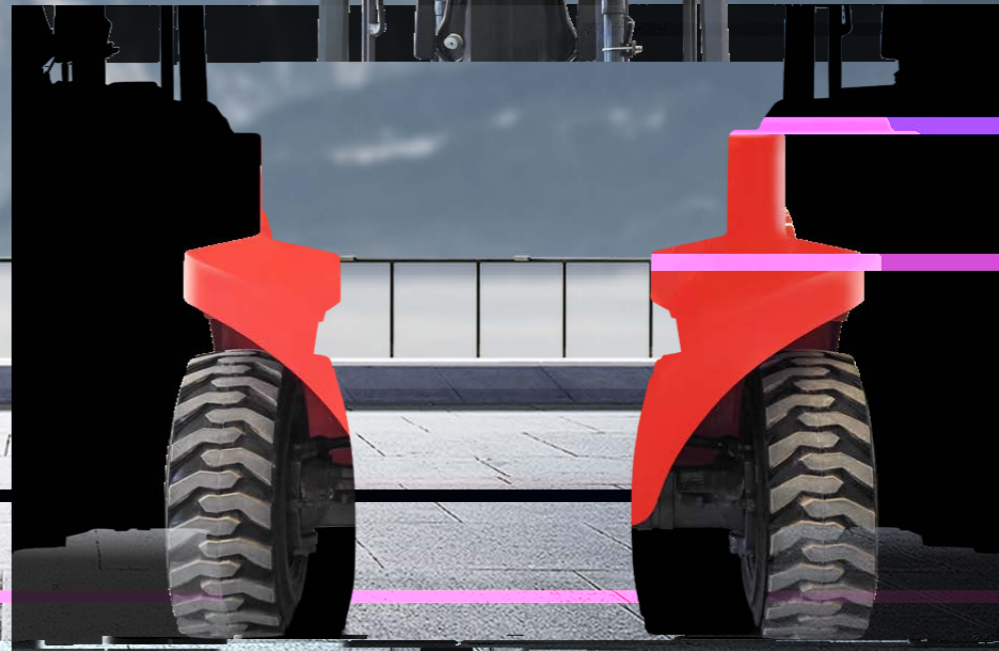
(Customer Service Hotline) / 4001-600761
(Service Tel) / +86-551-63689000,63648005



R系列2-5t



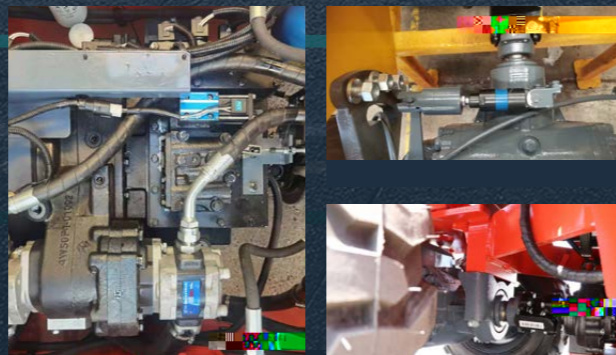
大花纹专用越野胎



- 2-3.5t: 18-19km/h
2-3.5t: 23-24km/h
4-5t: 28-30km/h
- 2-3.5t: 60%
4-5t: 40%
- 2-3.5t: 510mm/s
4-5t: 500mm/s
- 2-3.5t: 560mm/s
4-5t: 550mm/s

强劲高效

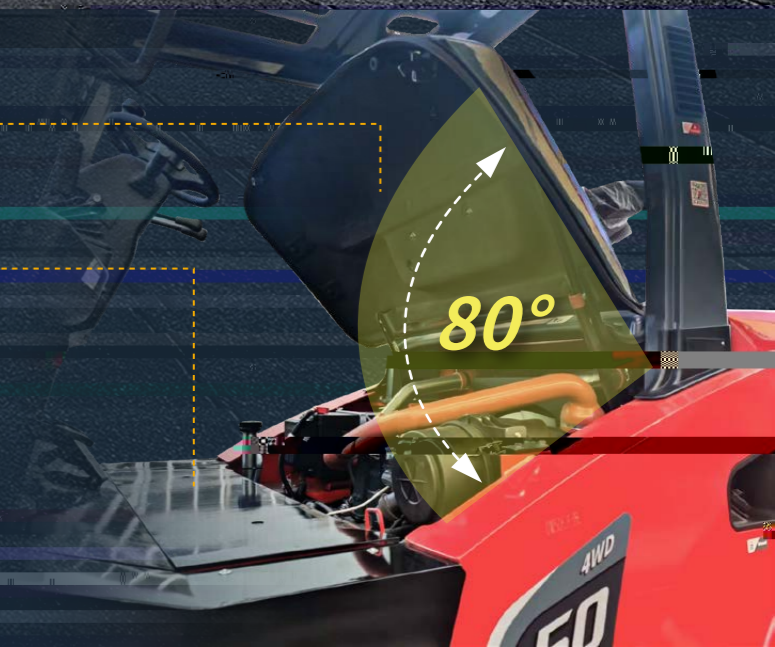
2-3.5t 3 3 2 1 4-5t 3 1



机罩大角度开启

80°

倾斜油缸



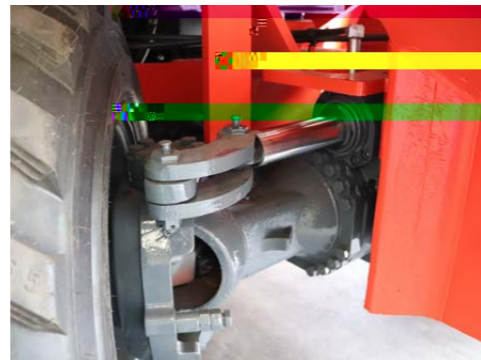
配置优越



驱动桥标配差速锁:



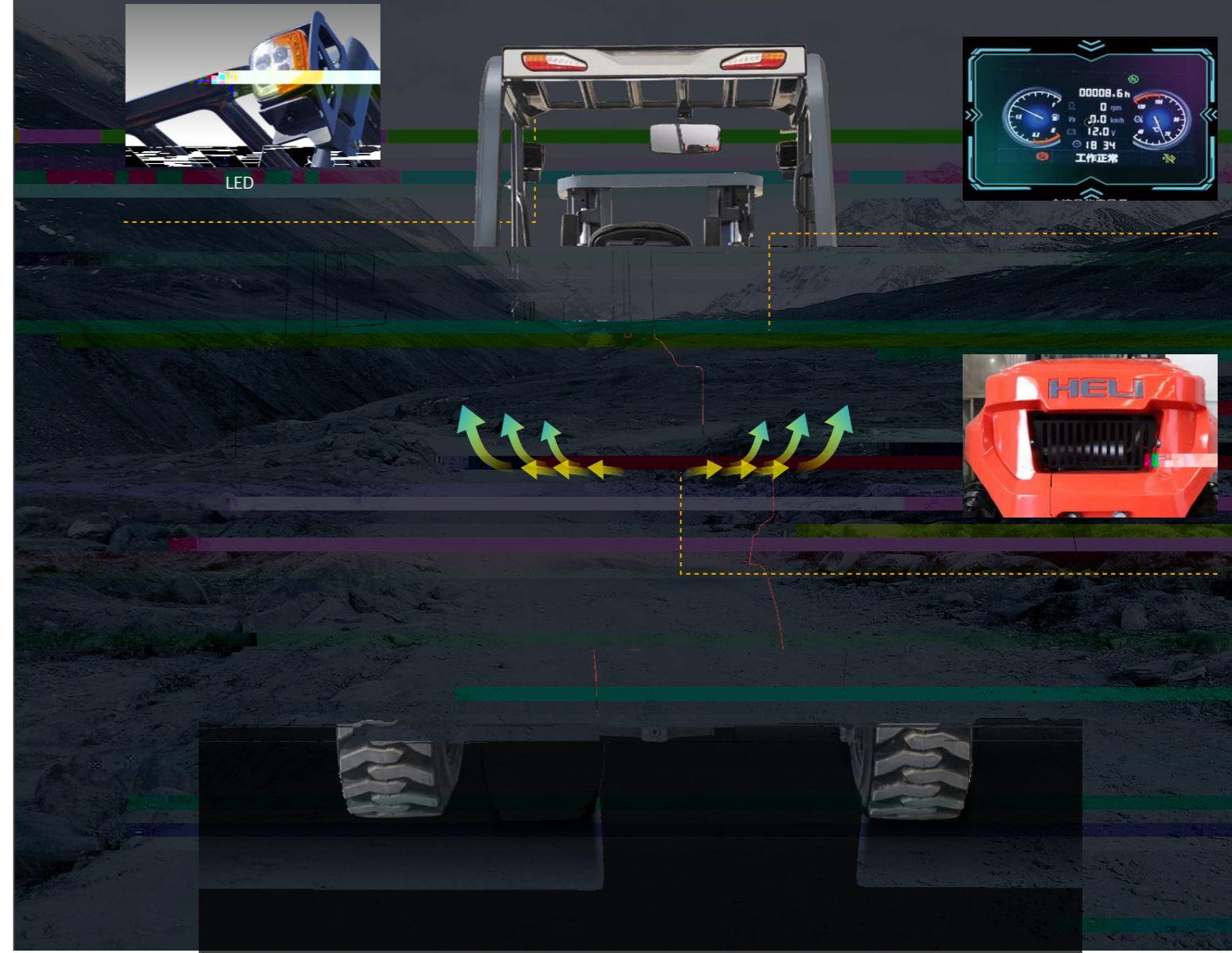
超大转角四驱转向桥, 车辆转弯半径小:



发动机:
2-3.5t 4-5t



2-3.5t
4-5t

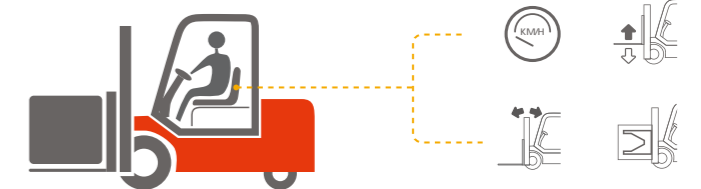


智能换挡和全套OPS功能

IP65

OPS (驾驶员在位感知系统)

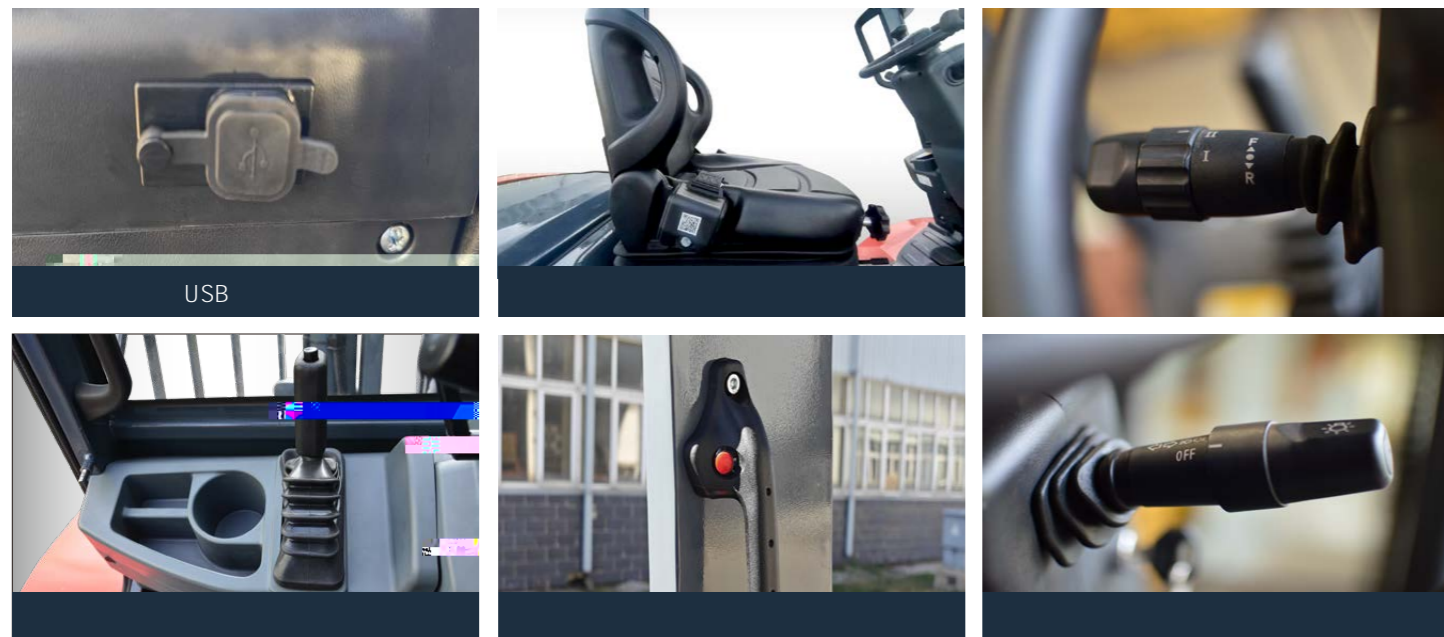
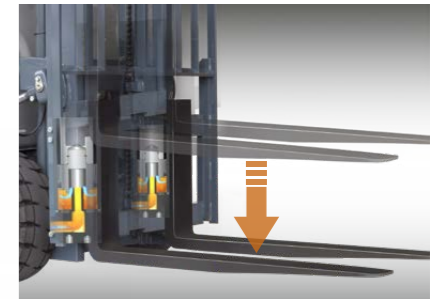
无人自锁 智能保护



驾驶舒适

安全可靠

USB



各项性能试验、淋雨试验, 确保车辆的性能、安全性和可靠性达到预定的标准和要求。



制造商和技术参数

HELI								
1.01								
1.02			CPCD20KU5Y4R-2	CPCD25KU5Y4R-2	CPCD30KU5Y4R-2	CPCD35KU5Y4R-2	CPCD30KU6Y4R-3	CPCD35KU6Y4R-3
1.03		kg	2000	2500	3000	3500	3000	3500
1.04		mm	500	500	500	500	500	500
1.05								
1.06								
2.01		H	mm	3000	3000	3000	3000	3000
2.02		H1	mm	2225	2225	2225	2275	2225
2.03		H2	mm	4185	4185	4375	4375	4375
2.04		H3	mm	150	150	155	160	155
2.05		H4	mm	2420	2420	2420	2420	2420
2.06		H5	mm	290	290	290	290	290
2.07		H6	mm	1263	1263	1263	1263	1263
2.08		H9	mm	450	450	450	450	450
2.09		H13	mm	1092	1092	1282	1287	1282
2.10	/	(L/L')	mm	4164/3094	4164/3094	4224/3154	4229/3159	4224/3154
2.11		L1	mm	1940	1940	2000	2000	2000
2.12		L2	mm	584	584	589	594	589
2.13		L3	mm	540	540	575	575	575
2.14		W1	mm	1600	1600	1600	1600	1600
2.15	/	W3/W2	mm	1250	1250	1250	1250	1250
2.16	/	W5	mm	1560/250	1560/250	1560/250	1560/250	1560/250
2.17		r	mm	3513	3513	3585	3585	3585
2.18		r'	mm	1295	1295	1295	1295	1295
2.19		Ra	mm	5589	5589	5589	5594	5589
2.20	/	/	deg.	10/12	10/12	10/12	10/12	10/12
2.21		(L4xWxT)	mm	1070x 122x 40	1070x 122x 40	1070x 125x 45	1070x 125x 50	1070x 125x 45
3.01	/		km/h	19	19	19	19	24
			km/h	18	18	18	18	23
3.02	/		%	75	70	65	60	63
			%	40	38	38	36	36
3.03	/		kN	32	35	35	38	35
			kN	50	50	50	50	50
3.04	/	/	mm/s	504/510	504/510	510/560	420/450	510/560
3.05	/	/	mm/s	470/430	470/430	510/550	455/490	510/550
4.01			kg	4850	5050	5400	5700	5500
4.02	/		kg	5480/1370	6310/1240	6950/1450	7850/1400	7000/1500
4.03	/		kg	1940/2910	2160/2890	2300/3100	2400/3350	2350/3150
5.01	X=	/		2X/2	2X/2	2X/2		
5.02	/							
5.03	/			14-17.5-16PR/10-15.5-10PR	14-17.5-16PR/10-15.5-10PR	14-17.5-16PR/10-15.5-10PR		
5.04				-	-	-		
5.05								
6.01	/		V/Ah	12/95	12/95	12/95		
6.02	/			V2403	V2403	V2607		
6.03	/		kW/rpm	42.6/2400	42.6/2400	37.4/2400		
6.04	/		Nm/rpm	195.6/1500	195.6/1500	171.5/1500		
6.05				/	/	/		
6.06	/			2-1	2-1	3-3		

宽视野基本型门架

	mm	500mm kg				mm		kg				° /
		2t	2.5t	3t	3.5t	2-3t	3.5t	2t	2.5t	3t	3.5t	
M300	3000	2000	2500	3000	3500	2230	2280	4720	4920	5500	5850	10/12
M330	3300	2000	2500	3000	3500	2380	2430	4780	4980	5560	5910	10/12
M350	3500	2000	2500	3000	3500	2480	2530	4800	5000	5580	5920	10/12
M370	3700	2000	2500	3000	3500	2580	2630	4820	5020	5600	5940	10/12
M400	4000	2000	2500	3000	3500	2780	2830	4890	5090	5670	6010	10/12
M450	4500	2000	2500	3000	3500	3030	3080	4930	5130	5710	6060	10/12
M500	5000	1650	2100	2600	3300	3280	3330	4980	5180	5760	6100	10/10
M550	5500	1400	1800	2300	2650	3580	3630	5070	5270	5850	6190	10/10
M600	6000	1000	1400	1900	2050	3830	3880	5110	5310	5890	6230	10/10

二级全自由门架

	mm	500mm kg				mm		(mm)			(kg)				° /
		2t	2.5t	3t	3.5t	2-3t	3.5t	2-2.5t	3t	3.5t	2t	2.5t	3t	3.5t	
ZM300	3000	2000	2500	3000	3500	2230	2280	940	840	943	4770	4970	5550	5820	10/12
ZM330	3300	2000	2500	3000	3500	2380	2430	1090	990	1093	4800	5000	5580	5850	10/12
ZM350	3500	2000	2500	3000	3500	2480	2530	1190	1090	1193	4820	5020	5600	5870	10/12
ZM370	3700	2000	2500	3000	3500	2580	2630	1290	1190	1293	4840	5040	5620	5890	10/12
ZM400	4000	2000	2500	3000	3500	2780	2830	1490	1390	1493	4920	5120	5700	5970	10/12

三级全自由门架

	mm	500mm kg				mm		(mm)			(kg)				° /
		2t	2.5t	3t	3.5t	2-3t	3.5t	2-2.5t	3t	3.5t	2t	2.5t	3t	3.5t	
ZSM360	3600	2000	2500	3000	3500	2030	2030	740	640	640	5090	5290	5650	5940	10/12
ZSM400	4000	2000	2500	3000	3500	2180	2180	890	790	790	5130	5330	5690	5980	10/12
ZSM435	4350	2000	2500	3000	3500	2280	2280	990	890	890	5160	5360	5720	6010	10/12
ZSM450	4500	2000	2500	3000	3500	2330	2330	1040	940	940	5170	5370	5740	6020	10/12
ZSM470	4700	2000	2500	3000	3400	2390	2390	1100	1000	1000	5190	5390	5760	6040	10/12
ZSM500	5000	1700	2100	2600	3300	2530	2530	1240	1140	1140	5230	5430	5790	6080	10/10
ZSM540	5400	1500	1600	1900	2700	2630	2630	1340	1240	1240	5260	5460	5820	6110	10/10
ZSM600	6000	1000	1100	1500	2000	2830	2830	1540	1440	1440	5360	5560	5930	6210	10/10

可选配的叉车发动机型号及其主要技术参数

			/	/		x	
			kW/rpm	Nm/rpm			
CPCD30/35-KU6Y2R-3	V2607	3-3	37.4/2400	171.5/1500	2.615	4-87x 110	/
CPCD20/25/30/35-KU5Y2R-2	V2403	2-1	42.6/2400	195.6/1500	2.434	4-87x 102.4	/
CPCD20/25/30/35-W3Y4R-2	4JG2PE-02	2-1	44.9/2450	184.7/1700	3.059	4-95.4-107	II
CPCD20/25/30/35-W3Y2R-2	4JG2PE-02	2-1	44.9/2450	184.7/1700	3.059	4-95.4-107	II
CPCD30/35-W4Y4R-2	GK-4JG2NKFC01	2-1	35/2450	170/1700	3.059	4-95.4-107	IIIA
CPCD30/35-W4Y2R-2	GK-4JG2NKFC01	2-1	35/2450	170/1700	3.059	4-95.4-107	IIIA
CPCD30/35-XC7Y4R-2	3E22	2-1	44.8/2400	210/1600-1800	2.2	3-94x107	
CPCD30/35-XC7Y2R-2	3E22	2-1	44.8/2400	210/1600-1800	2.2	3-94x107	
CPCD20/25/30/35-Q3Y4R-2	V32-50V42	2-1	36.8/2500	190/1800	3.17	4-98x105	
CPCD20/25/30/35-Q3Y2R-2	V32-50V42	2-1	36.8/2500	190/1800	3.17	4-98x105	

特性										
1.01										
1.02				CPCD40	CPCD45	CPCD50				
1.03			kg	4000	4500	5000				
1.04			mm		600					
1.05										
1.06										
尺寸										
2.01		H	mm	3000	3000	3000				
2.02		H1	mm		2380					
2.03		H2	mm		4380					
2.04		H3	mm		150					
2.05		H4	mm		2580					
2.06		H5	mm		320					
2.07		H6	mm		1208					
2.08		H9	mm		690					
2.09	/	(L/L')	mm		4660/3440					
2.10		L1	mm		2150					
2.11		L2	mm		685					
2.12		L3	mm		605					
2.13		W1	mm		2050/1980					
2.14	/	W3/W2	mm		1650					
2.15	/	W5	mm		1340/300					
2.16		r	mm		4520					
2.17		Ra	mm		6440					
2.18	/	/	deg.		10°/12°					
2.19		(L4xWxT)	mm		1220x155x50					
性能										
3.01	/		km/h		30					
			km/h		28					
3.02	/		%		45					
3.03	/		kN		60					
3.04	/	/	mm/s		500/550					
3.05	/	/	mm/s		450/400					
重量										
4.01			kg	7450 7550	7800 7900	8100 8200				
车轮和轮胎										
5.01	X=	/			2X/2					
5.02	/									
5.03	/				385/65-22.5-16TL/12-16.5-10-TL					
5.04					-					
5.05										

V3307	+	+DOC+DPF+EGR	CPCD40-50-KU4Y4(2)R-3-06	12/95	55.4/2200	335/1400	3.33	4-94× 120	/ /
V35-88C4#98	+	+DOC+DPF+EGR	CPCD40-50-QC13Y4(2)R-3-6	12/95	65/2200	350/1800	3.47	4-98× 115	
4C6-88C31 498	+		CPCD40-50-QC7Y4(2)R-3-06	12/95	65/2200	350/1800	3.47	4-98× 115	
S6S-T	VE	+	CPCD40-50-MIY2R-3-06	2× 12/80	63.9/2300	285/1700	4.996	6-94× 120	A

宽视野基本型门架

	mm	500mm kg			mm	4-5t	kg			° /
		4t	4.5t	5t			4t	4.5t	5t	
M260	2600	4000	4500	5000	2200	150	7716	8066	8386	10/12
M270	2700	4000	4500	5000	2250	150	7728	8078	8398	10/12
M300	3000	4000	4500	5000	2400	150	7762	8112	8432	10/12
M330	3300	4000	4500	5000	2550	150	7796	8146	8466	10/12
M350	3500	4000	4500	5000	2650	150	7819	8169	8489	10/12
M370	3700	4000	4500	5000	2750	150	7842	8192	8512	10/12
M400	4000	4000	4500	5000	2950	150	7931	8281	8601	10/12
M425	4250	4000	4500	5000	3075	150	7951	8301	8621	10/12
M450	4500	4000	4500	5000	3200	150	7980	8330	8650	10/12
M475	4750	3500	4000	4250	3325	150	8009	8359	8679	10/12
M500	5000	3200	3600	4000	3450	150	8036	8386	8706	10/6
M550	5500	2900	3200	3600	3700	150	8142	8492	8812	10/6
M600	6000	2600	3000	3300	3950	150	8198	8548	8868	10/6

宽视野两级全自由门架

	mm	500mm kg			mm	4-5t	kg			° /
		4t	4.5t	5t			4t	4.5t	5t	
ZM261	2610	4000	4500	5000	2240	900	7812	8162	8482	10/12
ZM271	2710	4000	4500	5000	2290	950	7827	8177	8497	10/12
ZM300	3000	4000	4500	5000	2435	1095	7762	8112	8432	10/12
ZM330	3300	4000	4500	5000	2585	1245	7913	8263	8583	10/12
ZM350	3500	4000	4500	5000	2685	1345	7942	8292	8612	10/12
ZM375	3750	4000	4500	5000	2810	1470	7978	8328	8648	10/12
ZM400	4000	4000	4500	5000	2935	1595	8035	8385	8705	10/12
ZM450	4500	3700	4200	4500	3185	1845	8107	8457	8777	10/12
ZM500	5000	3200	3600	4000	3435	2095	8177	8527	8847	6/6
ZM550	5500	2900	3200	3600	3685	2345	8296	8646	8966	6/6
ZM600	6000	2600	3000	3300	3935	2595	8345	8695	9015	6/6

可靠的专用仪表

- 1 LCD
- 2 CAN
- 3 IP66
- 4 -30 75 -40 85
- 5
- 6 20 6
- 7
- 8
- 9
- 10
- 11 GPS

